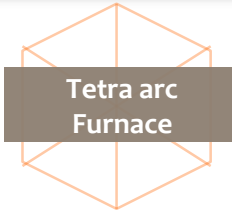


Tetra arc furnace

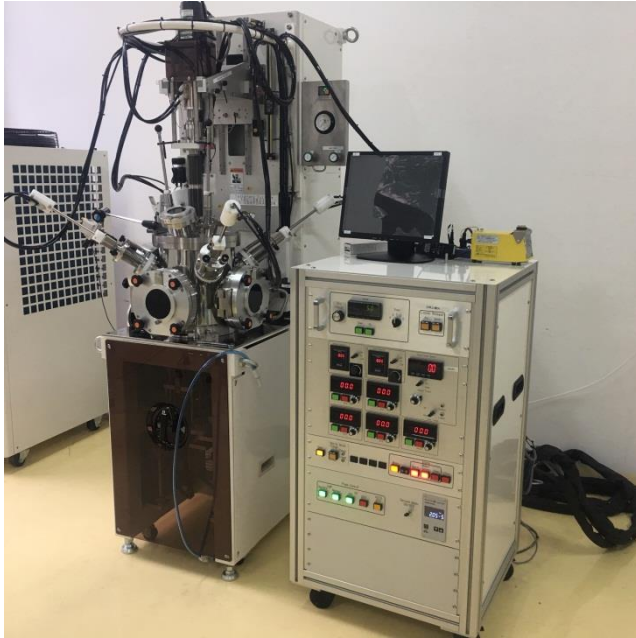
(Electric arc heating type CZ furnace)

- Quick crystal growth
- High vacuum system
- High temp growth



Tetra arc Furnace

Product Information



Photograph of Crystal Tetra arc furnace

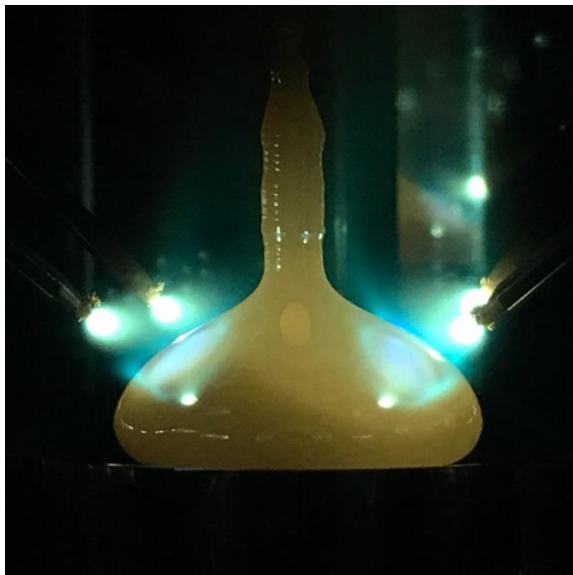
Outline

Tetra arc furnace is a one of Czochralski furnace

High-melting-point material is melted by four electric arcs

Temperature of the sample in the hearth is uniformly.

Contamination in the chamber is easily cleaned up



View of Crystal growth via Tetra arc furnace

Specification

Arc generator / Getter generator	200A
Rotation speed	0-10rpm
Pulling speed (slow)	0-39mm/ hour (servo-motor)
Pulling speed (high)	175mm/min (fix)
stroke	150mm
Vacuum discharge system	Turbo molecule pump:240L/sec + Rotary pump: 200L/min

Crystals for your future



C&A Corporation

Single Crystal Growth Service
 Consulting of crystalline business
 Scintillator crystals, arrays and scintillation detectors
 Piezoelectric crystals and piezoelectric devices